



## Cellular Scanning Multi-Tool That Fits in Your Pocket

PRISM converts mobile devices into a 5G, 4G, and P25\* network survey, scanning, testing, and troubleshooting scanner and spectrum analyzer

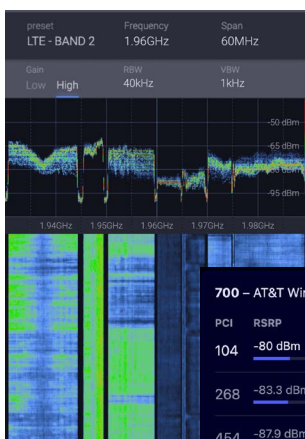
Go beyond simple smartphone apps to get a detailed view of your cellular environment. PRISM is a self-contained, lightweight scanner and spectrum analyzer that easily connects to mobile devices to provide real-time, deep insight into coverage, interference and benchmarking. PRISM brings the power of large, expensive engineering tools to cost-effective handheld devices that can easily be used in the field. With PRISM, today's RF specialists get the tool they need to be productive and agile.



PRISM easily mounts to mobile devices and weighs under 114 grams (4 oz.)

### KEY HIGHLIGHTS

- Provides view to visualize signals and interference
- Quickly verifies coverage of all networks
- Decodes all channels in multiple technologies
- Allows insight into all cells, networks, and technologies, not just the one associated with a phone
- Ideal for network survey and discovery, in-building survey and discovery, quick coverage and quality troubleshooting and measurements



### SPECTRUM ANALYZER

Simple to configure and align to communications bands of interest. Real time and waterfall display provides a full view in a single window. 70MHz to 6 GHz, 50MHz IBW, fully configurable sweep range.

### 5G / 4G / P25 PCI SCANNER

Fast results on multiple networks and PCIs

Full band blind scan finds all cells without having to know the EARFCN or center frequency

Provides real-time PCI measurements of all received cells.

\* Some limitations apply. Please contact your sales rep for details.

## FEATURES

### DATA MODES

#### LTE (4G)

PCI, EARFCN, Frequency, Cell Identity, MCC/MNC, TAC, RSI, RSRP, RSRQ, SINR, MIB, SIBs 1-4<sup>†</sup>

#### NR (5G)

PCI, NRARFCN, Frequency, Cell Identity, MCC/MNC, SS-RSI, SS-RSRP, SS-RSRQ, SS-SINR, SSB Beam Index, MIB, SIB 1<sup>†</sup>

#### P25

RSSI, BER, SNR, Network ID, WACN ID

### LOGGING REPORT<sup>†</sup>

1 point / channel / second

## PERFORMANCE

### MEASUREMENT RATE

#### LTE (4G)

7 / sec\*

#### NR (5G)

3 / sec\*

#### P25

4 / sec

### POWER MEASUREMENT ACC.

±2 dB @ 25°C (77°F)

### MIN DETECTION LEVEL

-127.5 dBm

## PHYSICAL

### SIZE

#### Width

87 mm (3.4")

#### Length

61 mm (2.4")

#### Height

12 mm (0.5")

### WEIGHT

4 oz (114 g)

### POWER

USB-C - 3 W (active)

## ENVIRONMENTAL

### OPERATING TEMP RANGE

0°C to +50°C

### WARANTY

1 year with service plan

### CALIBRATION INTERVAL

1 year

<sup>†</sup> Requires Advanced Scanning License

\* Single PCI



PRISM mounted to smartphone

## From the RF Experts at Epiq Solutions

You need tools that are reliable and work. The RF experts at Epiq Solutions have over a decade of proven experience delivering mission-critical RF tools primarily for aerospace, defense, and security applications. Coupled with an engineering culture built on pushing the boundaries of what's possible in RF design, our expertise and field-proven technology offer you an operational advantage in the products we produce.

Epiq Solutions is a business dedicated to advancing RF technology through products designed and manufactured in the U.S.A.



web: [epiqsolutions.com](http://epiqsolutions.com)  
email: [sales@epiqsolutions.com](mailto:sales@epiqsolutions.com)  
phone: (847) 598-0218

3740 Industrial Avenue  
Rolling Meadows, IL  
60008