

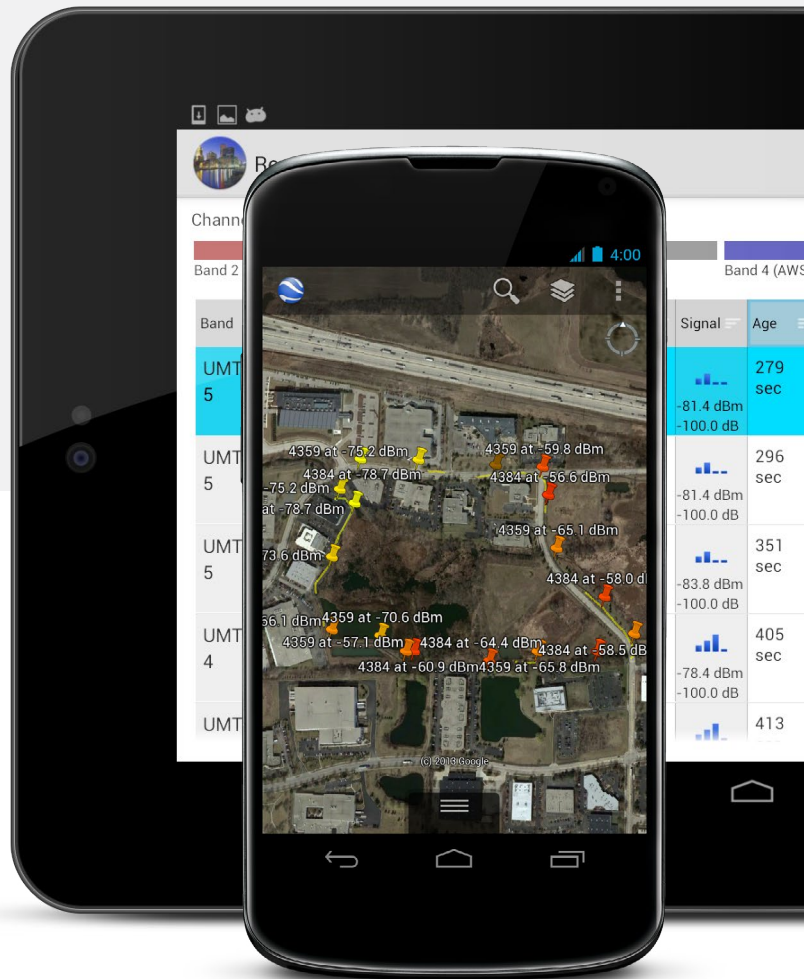
Multi-Technology Cellular Scanner

GSM • CDMA2K • EVDO • UMTS/HSPA • LTE

Skylight Multi-Technology Cellular Scanner is the first commercially available pocket sized cellular survey tool available for Epiq Solutions software defined radios. Skylight enables comprehensive and flexible network analysis.

KEY FEATURES

- » Multi-technology downlink channel scanner and decoder
- » Flexible software based application
- » Runs on Epiq Solutions' Matchstiq™ and Sidekiq™ based software defined radios
- » Includes Android app for general user operation
- » ICD available for custom integration and deployment
- » High performance decoding for real-time analysis
- » Able to operate within all bands
- » Single channel monitoring for deep dive analysis
- » Able to run headless for UAV applications



KML formatted results displayed in Google Earth

SPECTRUM MANAGEMENT

Survey and analyze environment to determine spectrum usage in ways simple RF analysis methods fall short.

QUALITY OF SERVICE ANALYSIS

Lock on and monitor single channels and neighbors to analyze network coverage and other QoS metrics.

MOBILE ENGINEERING TEST

Enable a wide range of mobile engineering and test setups without excess or difficult to use equipment.

INDEPENDENT VERIFICATION

Easily verify network configuration independently from network operator.

LOG AND EXPORT

Log and export survey information for post-processing and record keeping.

BASE STATION LOCATION

Automatically locate base stations while conducting a survey.

As survey is performed on the Epiq Solutions SDR, results can be sent over Wi-Fi or USB to Android or other supported devices.

Epiq Solutions software defined radios define state-of-the-art in small form factor and low power consumption, providing an ideal platform for mobile survey applications.

Band	Carrier	Downlink	Uplink	Signal
UMTS 5	ATT 310-410	4384 876.8 MHz 415	4159 831.8 MHz	-81.4 dBm -100.0 dB
UMTS 5	ATT 310-410	4384 876.8 MHz 379	4159 831.8 MHz	-81.5 dBm -100.0 dB
UMTS 5	ATT 310-410	4359 871.8 MHz 379	4134 826.8 MHz	-83.1 dBm -100.0 dB
UMTS 4	T-Mobile 310-260	2062 2147.5 MHz 365	1837 1747.5 MHz	-78.4 dBm -100.0 dB
UMTS 4	T-Mobile 310-260	2062 2147.5 MHz 341	1837 1747.5 MHz	-75.8 dBm -100.0 dB



Sample Channel Details

SAMPLE PARAMETERS

GSM

Band, Channel, RSSI, Cell ID, PLMN, LAC, Neighbor Cells, BSIC, CRO, SI1, SI2, SI2bis, SI2ter, SI2quater, SI3, SI4, SI13

EVDO

Band, Channel, RSSI, EC_I0, Maximum Revision, Minimum Revision, Pilot PN Offset, MCC, Sector ID, Channels, Neighbors, Extended Channels, Layer 3 Sync Channel, Layer 3 Sync Message

CDMA2K

SID, NID, Pilot PN Offset, Reg Period, Reg Zone ID, Base ID, Base Class, MCC, Neighbor Cells, Channel, RSSI, EC_I0, Page Channel, Layer 3 Messages

ICD

An ICD is available for advanced users with specific needs or the desire to integrate survey into their own applications.

CUSTOM DEVELOPMENT AND ENGINEERING

Have a special need that we haven't addressed or would like early access to our full set of survey capabilities? We can help. We offer a wide range of custom development and engineering services to help address unique project and time requirements. Contact us so we can help you find a solution.

For availability and pricing, please contact sales@epiqsolutions.com

UMTS/HSPA

Band, Channel, RSSI, Cell ID, PLMN, LAC, Ec/N0, Primary Scrambling Code (PRISC), Neighbor Cells, RSCP, SRXLEV, SQUAL, RS, RAC, MIB, SIB1, SIB2, SIB3, SIB5, SIB7, SIB11, SIB18, SB1, SB2

FD-LTE / TD-LTE

Band, Channel, RSSI, RSRP, RSRQ, Transmit Antenna Count, System Frame Number, HARQ Information, Neighbor Cells, Downlink Bandwidth, FDD or TDD, Physical Cell ID, Global Cell ID, TAC, Cell Reselection Priority, MIB, SIB1, SIB2, SIB3, SIB4, SIB5, SIB6, SIB7, SIB8

Epiq Solutions exports its products strictly in accordance with all US Export Control laws and regulations which shall apply to any purchase or order.